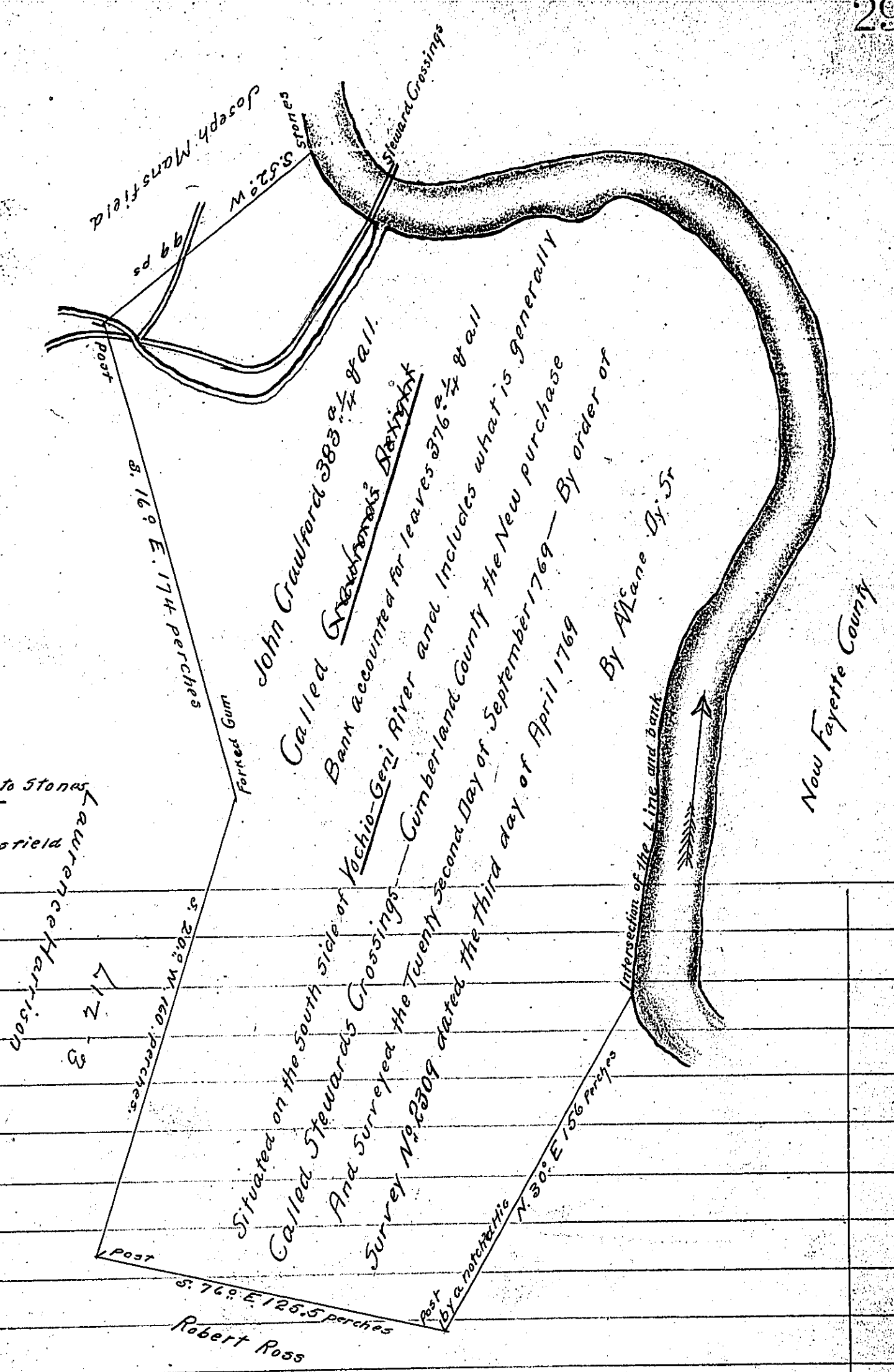


River Courses

- N 13° E 32 pc
- N 4° E 40.4 pc
- N 15° E 26 pc
- N 31 1/4° E 33.3 pc
- N 26° E 25 pc
- N 16 1/2° E 23 pc
- N 7° W 21.6 pc
- N 21° W 24.6 pc
- N 36 1/2° W 20.7 pc
- N 51° W 25 pc
- N 78° W 26.3 pc
- S 64° W 37.5 pc
- N 78 1/2° W 42 pc

N 37° W 35.4 pc to Stones  
 Total 412.8  
 a. Corner of Joseph Mansfield



Note --- these Courses were all run upon the Beech which includes a greater quantity of Land than I have returned.

To *John Lukens Esqr*  
 Surveyor General

IN TESTIMONY that the above is a copy of the original remaining on file in the Department of Internal Affairs of Pennsylvania, made conformably to an Act of Assembly approved the 16th day of February, 1833, I have hereunto set my Hand and caused the Seal of said Department to be affixed at Harrisburg, this second day of May 1904

*Samuel D. [Signature]*  
 Secretary of Internal Affairs.